

# Brannslukking i Protetikk

Asbjørn Jokstad  
Institutt for Klinisk Odontologi  
Universitetet i Oslo

Internett:

[http://www.odont.uio.no/protetikk/  
reparasjoner.pdf](http://www.odont.uio.no/protetikk/reparasjoner.pdf)



Tannstøttet



Fast Slimhinnestøttet



Avtagbart

Implantatstøttet



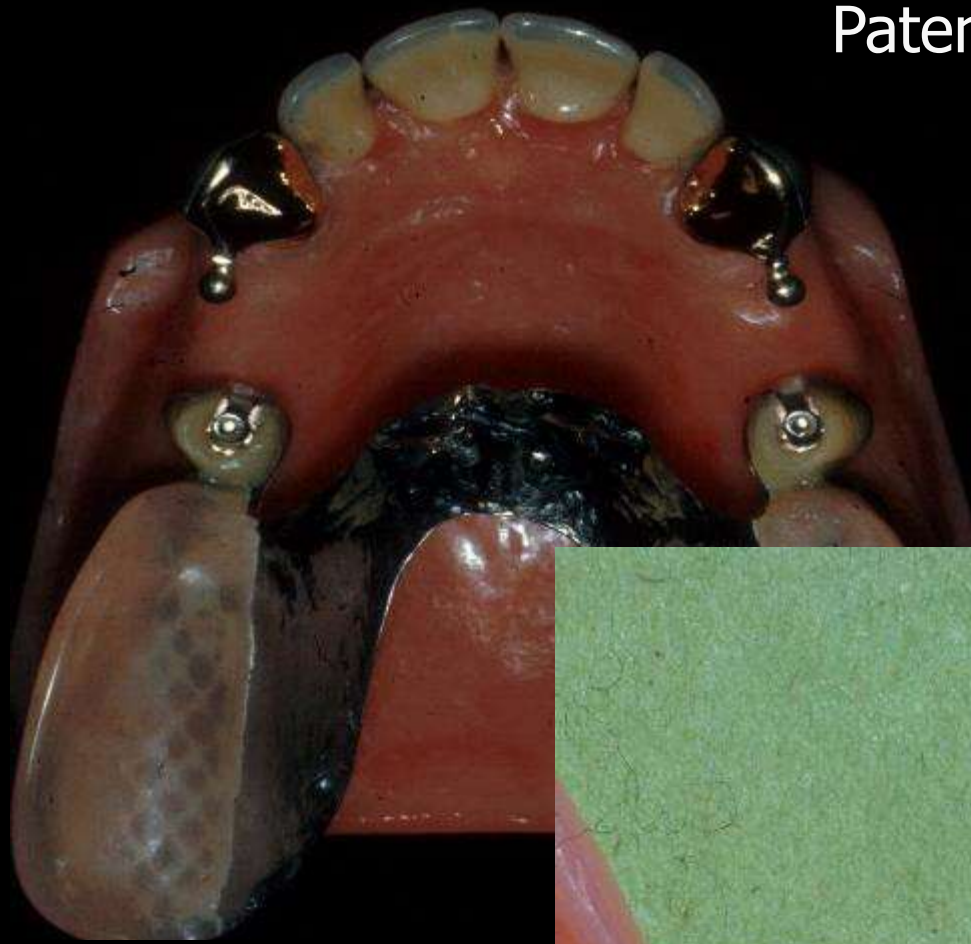
# Hyppige teknisk-mekaniske feil og skader og ulike implantatsystem

## Implantatstøttet HENVIS





# Patentfester syn. attachment



Relativt hyppige teknisk-mekaniske reparasjoner. Mange ulike attachments



PARTIELL/HELFRAKTUR

klammer/opplegg

matrise/patrise

protesebasis

Stomatitt /Candida

...overgang partiell til helprotese



Avtagbart





## Tannstøttet



### Patologiske tilstander

1. SEKUNDÆRKARIES
2. ROTBEHANDLING AV ANKERTANN
3. EKSTRAKSJON AV ANKERTANN

### Teknisk-mekaniske feil og skader

4. FASADEMATERIALE BORTE
5. " BROFESTE
6. " BRO
7. FRAKTUR





Hvor ofte er det problemer med fast protetik?

- Helkeramkroner (8%) (**OBS! Kort observasjonstid**)
- Stiftkonus (10%)
- Konvensjonelle singlekroner (11%)
- Etsbroer (26%)
- Konvensjonelle broer (27%)

Goodacre et al. Clinical complications in fixed prosthodontics. J Prosthet Dent

2003; 90: 31-41.

# Vanligste problem med etsebroer

	Number of prostheses studied/affected	Mean incidence
Debonding	7029/1481	21%
Tooth discoloration	343/62	18%
Caries	3426/242	7%
Porcelain fracture	1126/38	3%
Periodontal disease	748/0	0,0% (no significant changes)

Goodacre et al. 2003

# Vanligste problem med bro-proteser

Need for endodontic treatment	Number of prostheses or abutments studied/affected	Mean incidence
Caries	3360/602 abutments 1354/113 prostheses	18% of abutments 8% of prostheses
Need for endodontic treatment	2514/276 abutments 1357/88 prostheses	11% of abutments 7% of prostheses
Loss of retention	1906/137 prostheses	7%
Esthetics	1024/58 prostheses	6%
Periodontal disease	1440/62 prostheses	4%
Tooth fracture	1602/44 prostheses	3%
Prosthesis fracture	1192/24 prostheses	2%
Porcelain veneer fracture	768/17 prostheses	2%

Goodacre et al. 2003

## Patologiske tilstander i tenner og støttevev

1. SEKUNDÆRKARIES
2. ROTBEHANDLING AV PILAR
3. EKSTRAKSJON AV BROPILAR

## Teknisk-mekaniske feil og skader

4. FASADEMATERIALE BORTE
5. " BROFESTE
6. " BRO
7. BROFRAKTUR

## Konserverende behandling



## Patologiske tilstander i tenner og støttevev

1. SEKUNDÆRKARIES
2. ROTBEHANDLING AV PILAR
3. EKSTRAKSJON AV BROPILAR

## Teknisk-mekaniske feil og skader

4. FASADEMATERIALE BORTE
5. " BROFESTE
6. " BRO
7. BROFRAKTUR



**Krone av, inspeksjon,**  
**resementering**

## Patologiske tilstander i tenner og støttevev

1. SEKUNDÆRKARIES
2. ROTBEHANDLING AV PILAR
3. EKSTRAKSJON AV BROPILAR

## Teknisk-mekaniske feil og skader

4. FASADEMATERIALE BORTE
5. " BROFESTE
6. " BRO
7. BROFRAKTUR



# Vanligste problem med enkel-kroner

	Number studied/affected	crowns	Mean incidence
Need for endodontic treatment	823/27		3%
Porcelain fracture	199/6		3%
Loss of retention	1,061/19		2%
Periodontal disease	986/6		0.6%
Caries	1,105/4		0.4%

## MK-kroner

	Number of crowns studied/affected	Mean incidence
Fracture	4277/318	7%
Loss of retention	545/11	2%
Pulpal health	1088/15	1%
Caries	1650/13	0.8%
Periodontal disease	942/0	0.0% (no significant changes)

## Helkeram-kroner

Goodacre et al. 2003



## Singel krone:

- **Keram:**
  - Fraktur
  - Puss & poler
- **Fjerne:**
  - Krone
    - Tentativt reversibelt
    - Irreversibelt
  - Stift
- Resementering
- Tilpasse ny krone til eksisterende partiell protese-klammer



# Porselensreparasjon

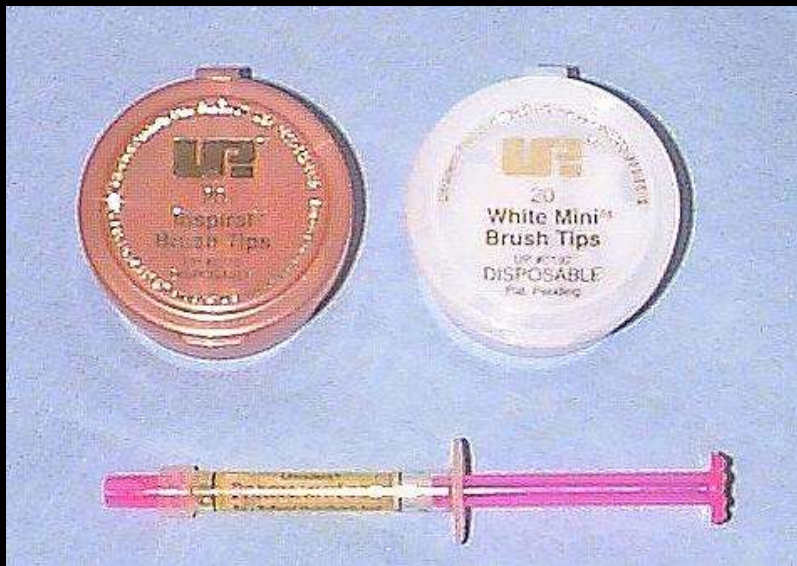


# Porselensreparasjon – Konsept 1/3

**Flusssyre +  
Silanisering**

**Eksempel:  
Porcelain Repair Kit.  
Porcelain Prep Kit**

**Ultradent  
PulpDent**



# Porselensreparasjon – Konsept 2/3

<b>Flusssyre +silan</b>	<b>“Porcelain Prep Kit”</b> PulpDent (9,6% HF->Dry-Rite->Silane Bond->...)
<b>Fosforsyre + silan</b>	<b>“Ceramic Repair Set”</b> Vivadent (37% PA->Monobond-S-> Heliobond->Monopaque-> Heliobond->Microhybrid)

# Porselensreparasjon – Konsept 3/3

<b>Konsept 1: Flusssyre +silan</b>	<b>“Porcelain Prep Kit” PulpDent (9,6% HF-&gt;Dry-Rite-&gt; Silane Bond-&gt;...)</b>
<b>Konsept 2: Fosforsyre +silan</b>	<b>“Ceramic Repair Set” Vivadent (37% PA-&gt; Monobond-S-&gt; Heliobond-&gt; Monopaque-&gt;Heliobond-&gt;Microhybrid)</b>
<b>Porcelain Liner M, Super-Bond C&amp;B</b>	<b>Sun Medical Kuraray/J. Morita</b>

# Porcelain Repair Kits

1. **Clearfil Repair**  
Kuraray
2. **Porcelain Repair Kit**  
Ultradent
3. **Ceramic Repair**  
Ivoclar Vivadent
4. **Porcelain Prep Kit**  
Pulpdent
5. **Porcelain Bonding Kit**  
Sultan Chemists

# Porselensreparasjon – Konsept 3/3

Flusssyre +silan	“Porcelain Prep Kit” PulpDent (9,6% HF->Dry-Rite-> Silane Bond->...)
Fosforsyre +silan	“Ceramic Repair Set” Vivadent (37% PA-> Monobond-S-> Heliobond-> Monopaque->Heliobond->Microhybrid)
Porcelain Liner M, Super-Bond C&B	Sun Medical, Kuraray/J. Morita
<b>Silane ((Ceramic) Primer)</b>	<b>e.g. Bisco, Kerr, Ultradent, 3M-ESPE</b>

# Silane Coupling Agents



- 1a. Clearfil Porcelain Bond Activator  
Kuraray
- 1b. RelyX Ceramic Primer  
3M ESPE
2. Monobond-S  
Ivoclar Vivadent
- 3a. Silane  
Ultradent
- 3b. Silane Bond Enhancer  
Pulpdent
- 3c. Silane Primer  
sds/Kerr
4. Silanator  
Cosmedent

# Rubber Polishing Instruments

## Composite

- 1a. **Astropol**  
Ivoclar Vivadent
- 1b. **D♦Fine Diamond Polishers for Hybrid Composites**  
Clinician's Choice
- 1c. **Hawe HiLuster**  
sds/Kerr
- 1d. **Jiffy HiShine**  
Ultradent
- 2a. **Diacomp**  
Brasseler
- 2b. **PoGo**  
Dentsply/Caulk
- 3a. **Hawe Occlubrush**  
sds/Kerr
- 3b. **Jiffy Brushes**  
Ultradent
4. **Jiffy Polishing Cups, Points, Disks**  
Ultradent

## Porcelain

1. **Dialite**  
Brasseler
- 2a. **CeraGlaze Ultimate**  
Axis
- 2b. **CeraMaster**  
Shofu
3. **D♦Fine Diamond Polishers for Porcelain**  
Clinician's Choice
- 4a. **Ceramisté**  
Shofu
- 4b. **Ceramisté Soft**  
Shofu





# Polishing Pastes

## Composite

1. **Prisma-Gloss/**  
**Prisma-Gloss Extra Fine**  
Dentsply/Caulk
2. **Insta-Glaze HYB**  
George Taub
- 3a. **CompoSite**  
Shofu
- 3b. **Enamelize**  
Cosmedent

## Porcelain

1. **Diamond Polish**  
Ultradent
- 2a. **Diamond Polishing Paste**  
Ivoclar Vivadent
- 2b. **Diamond Restoration Polish**  
Vident
- 2c. **Diashine**  
VH Technologies
- 2d. **Porcelize**  
Cosmedent
- 2e. **Truluster**  
Brasseler

# Tentativt reversibel kronedefjerning

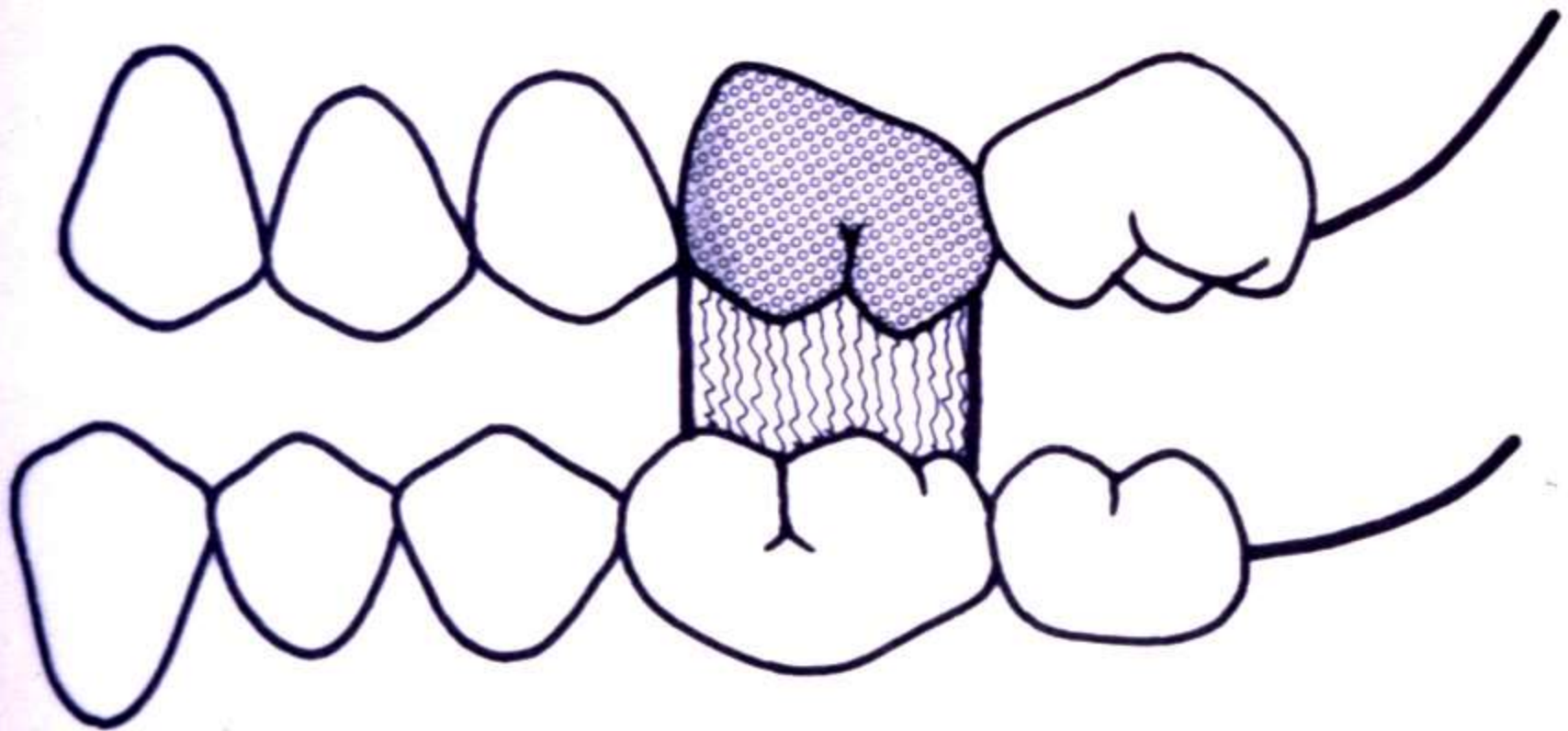
# Crown and Bridge Removers

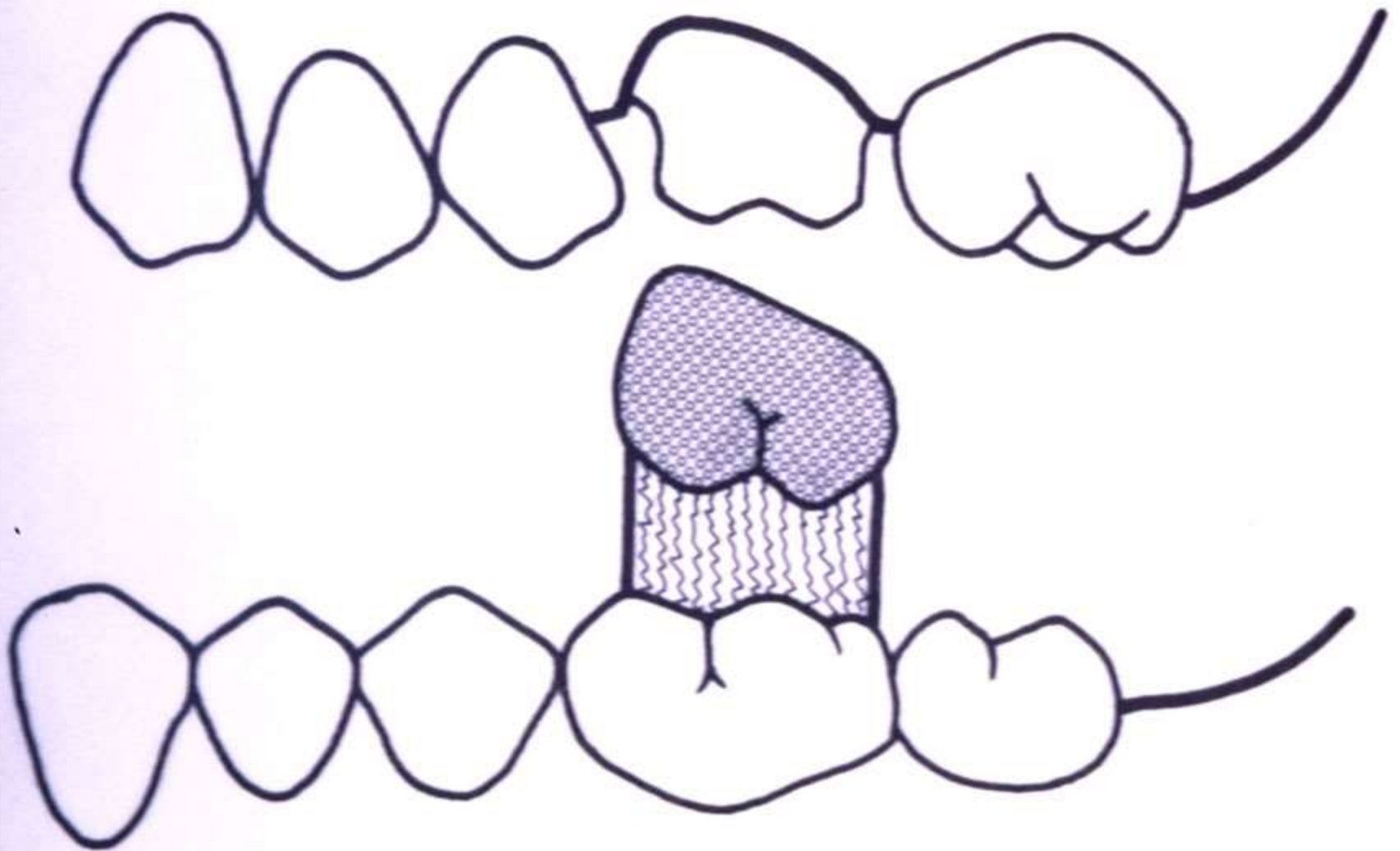
1. **CORONAflex 2005**  
KaVo
- 2a. **ATD Automatic Crown and Bridge Remover**  
J. Morita USA
- 2b. **Hawn Universal**  
NAE-Tech
3. **Crown Spreader**  
Brasseler
4. **Easy Pneumatic Crown and Bridge Remover**  
Dent Corp
5. **Richwil**  
Almore

# Richwill Teknikk

- Evaluer antagonist
- Varm pastillen i pakken
- Instruer pasient
- Tørrlegg krone og antagonist
- Tilpass pastille til kronen – gjerne tang
- Pasient lukker og holder lukket i 10 sek.
- Pasient gaper raskt opp
- Gjenta dersom behov

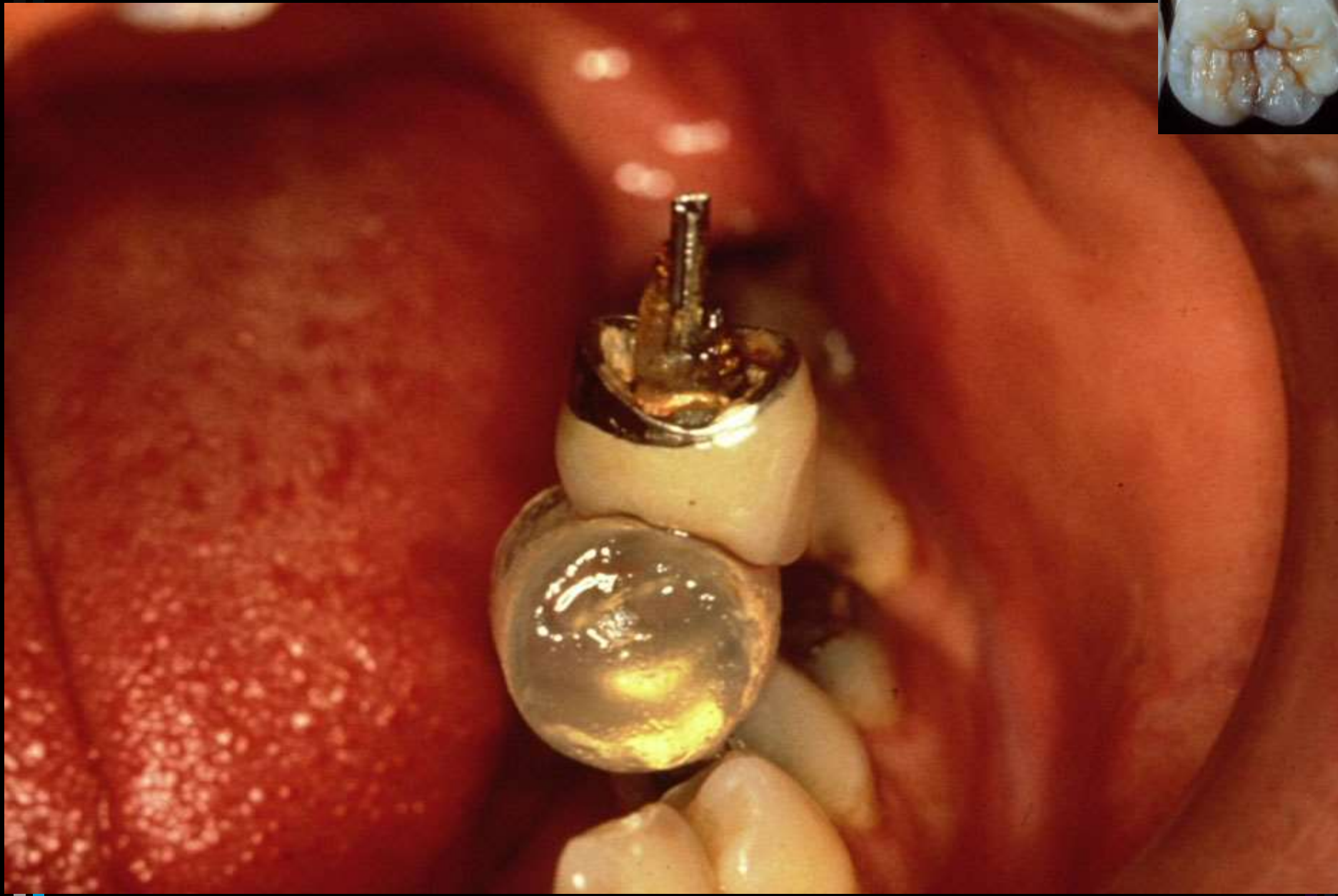












# Irreversibel kronedefjerning

# Kronefjerning

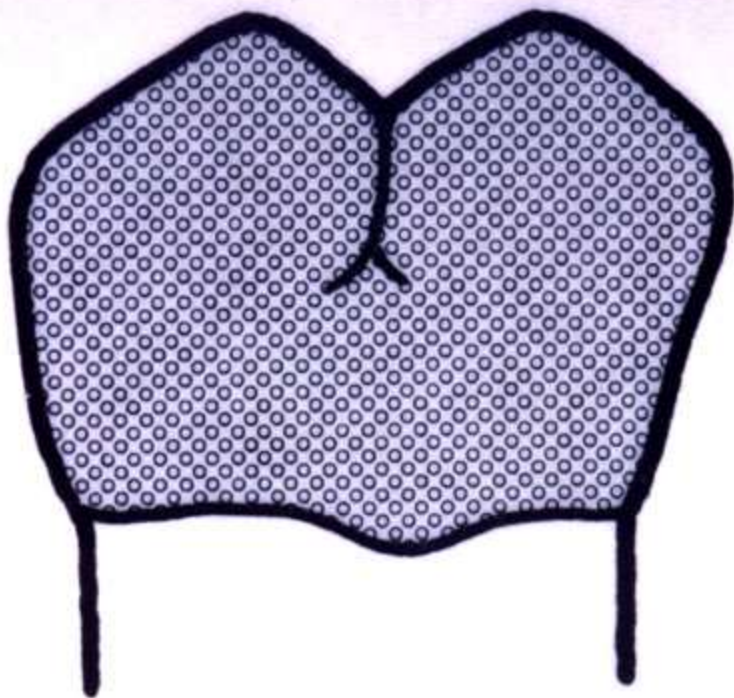
- Gasbind bakerst i svelg
- 330 Karbid eller H34-010
- Start hvor det er best tilgjengelig
- Lag en fure til sementlinjen for å ikke skade tann
- Fortsett fure inntil 1-2 mm krone står igjen lingualt
- Separer segmentene med et instrument
- Fjern kronen

A close-up photograph of a dental bur, a small metal tool used for grinding and shaping teeth. The bur is shown in profile, with its sharp, pointed tip. The background is a textured, blue surface. A blue rectangular box is overlaid on the right side of the image, containing the text 'H34-010' in white.

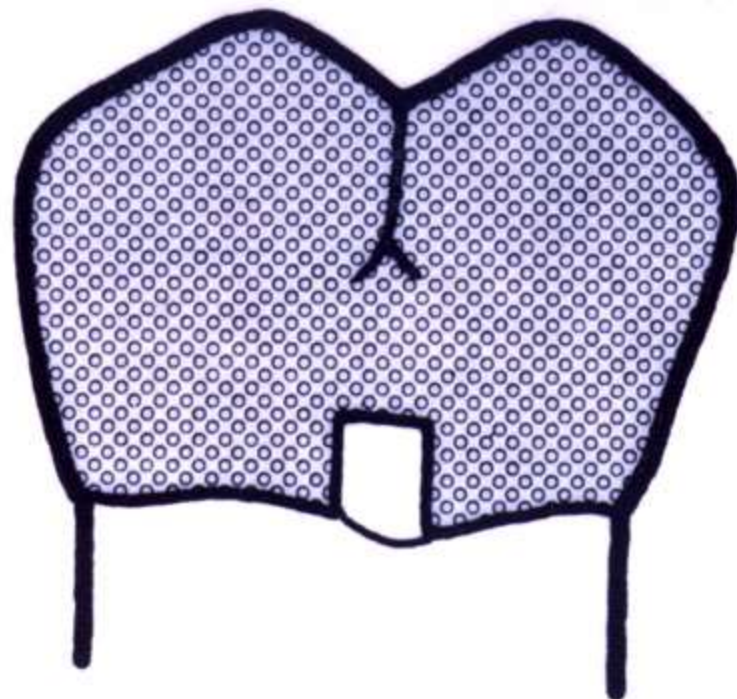
H34-010

A close-up photograph of a dental carbide bur. The bur is a small, cylindrical metal tool with a sharp, pointed tip. It is mounted on a larger, metallic base. The background is a textured, blue surface. A blue rectangular box with a white border is overlaid on the right side of the image, containing the text "330 Karbid".

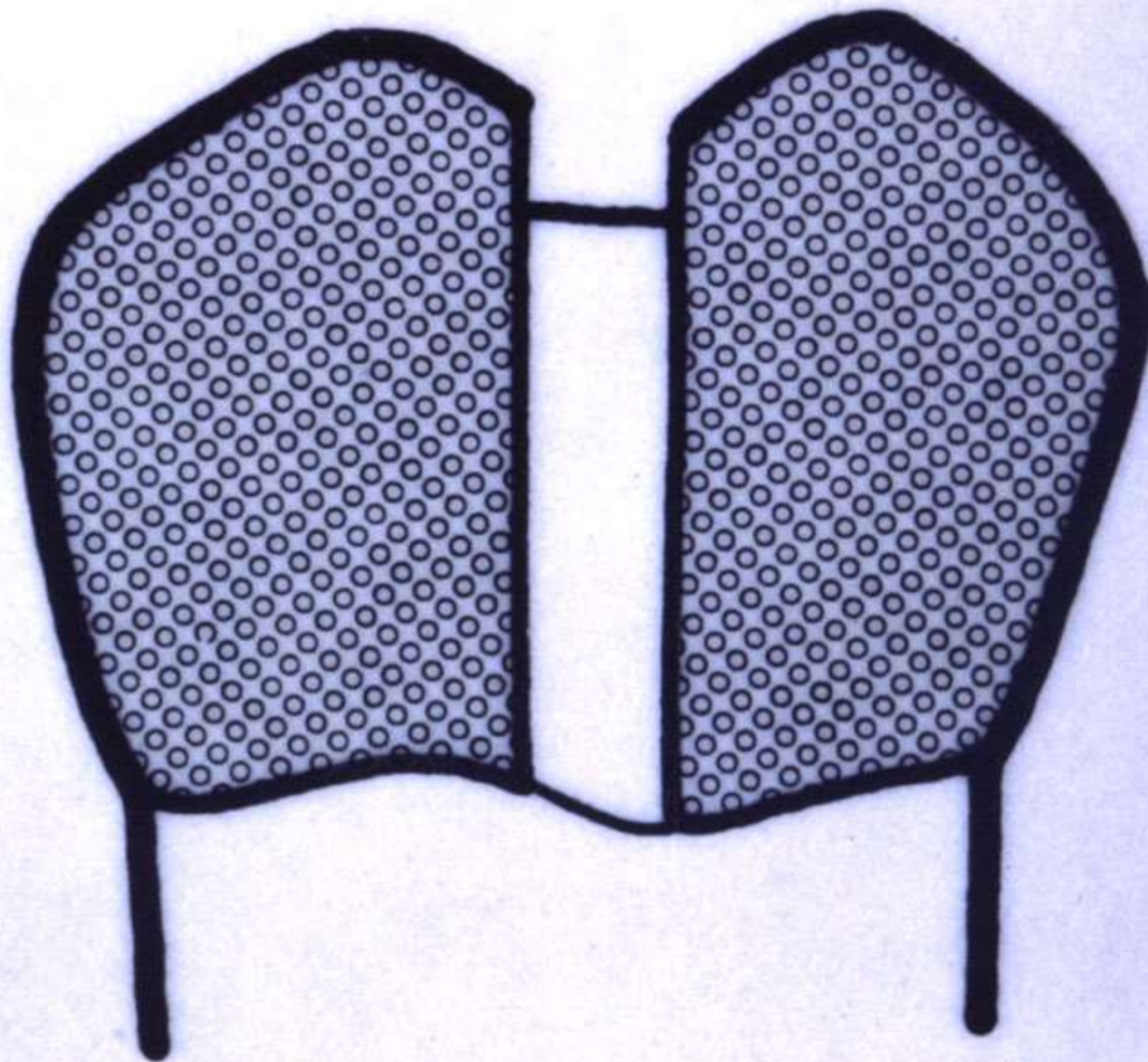
330 Karbid

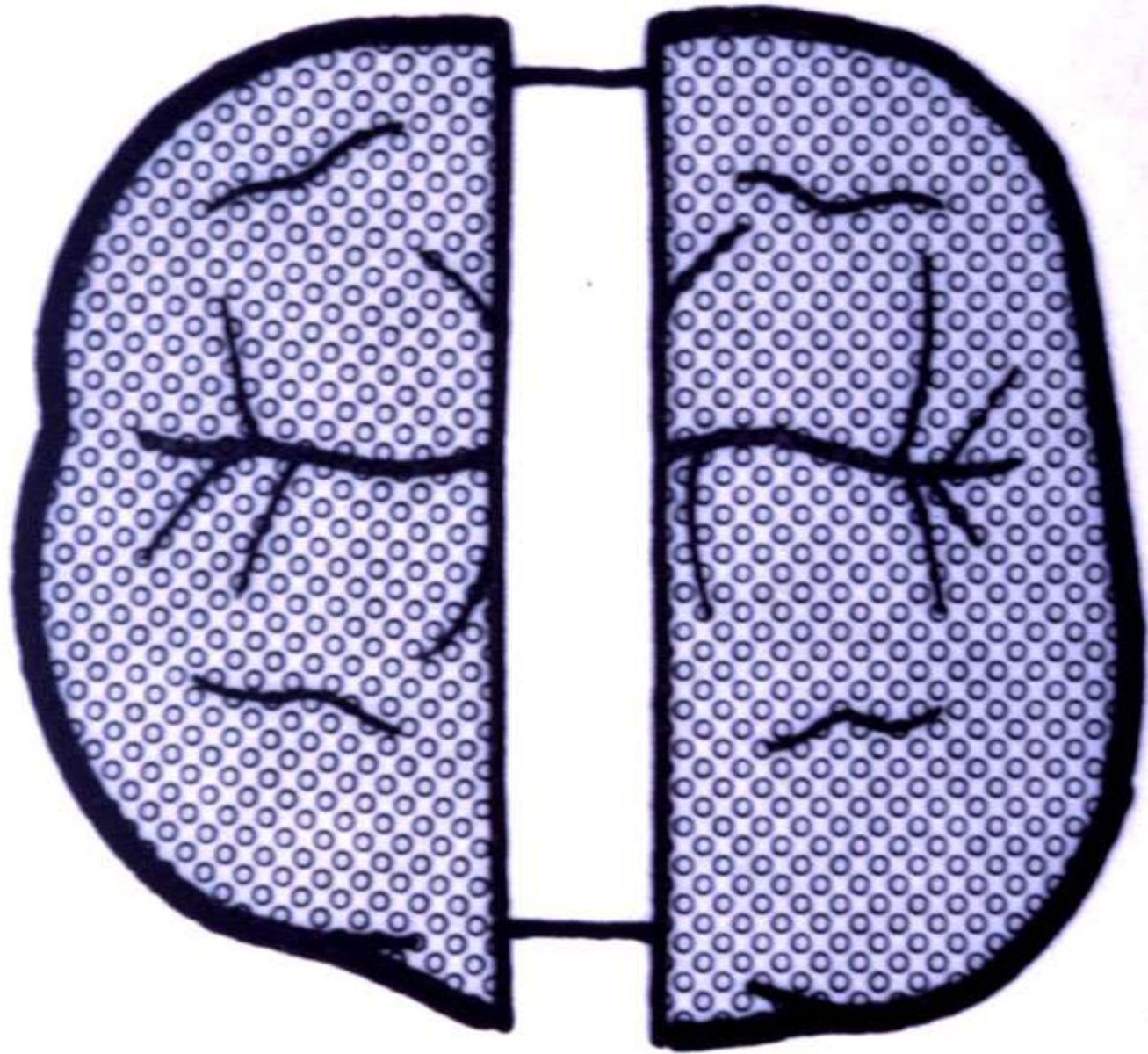


Buccalt

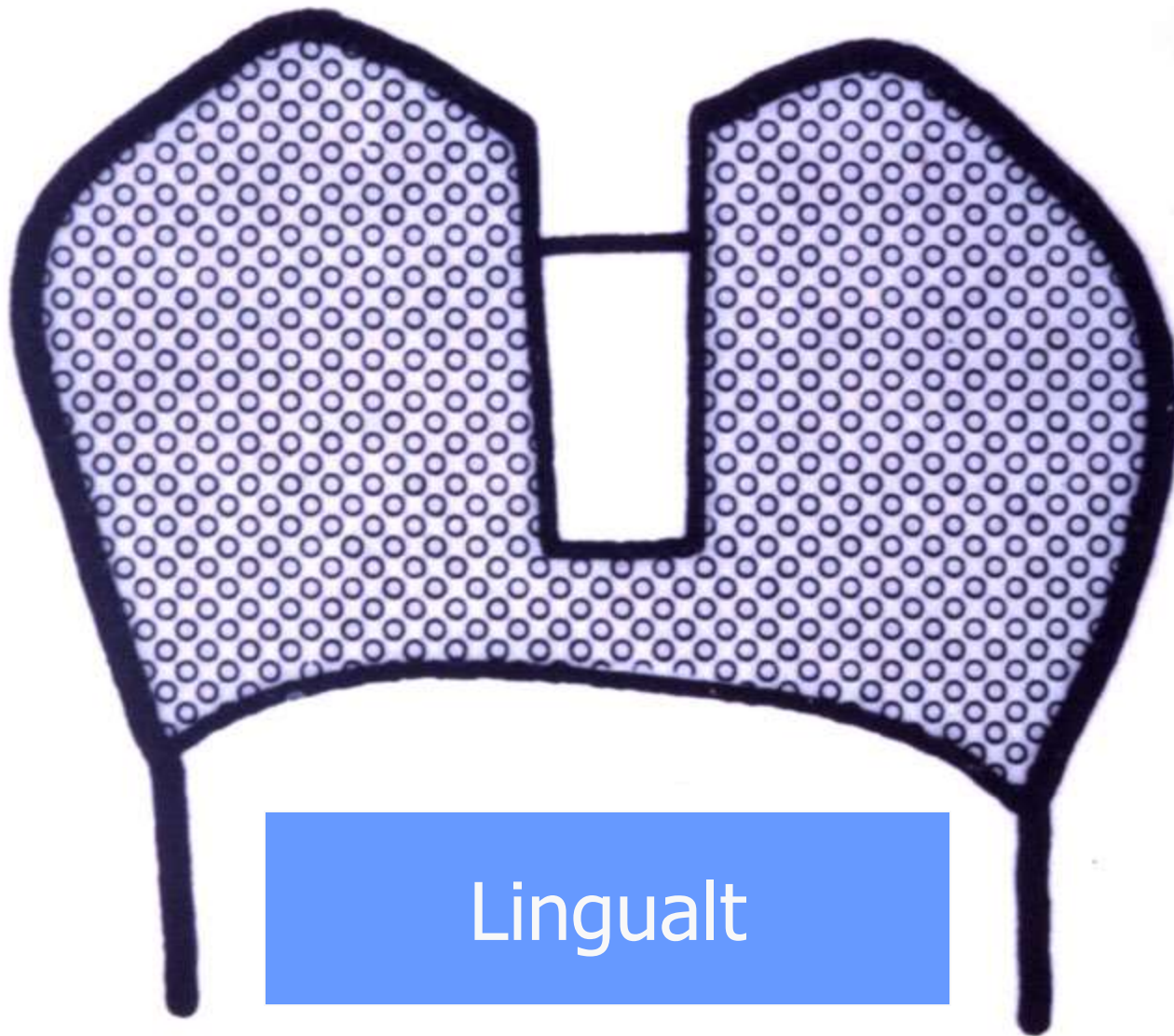


Sement Eksponert





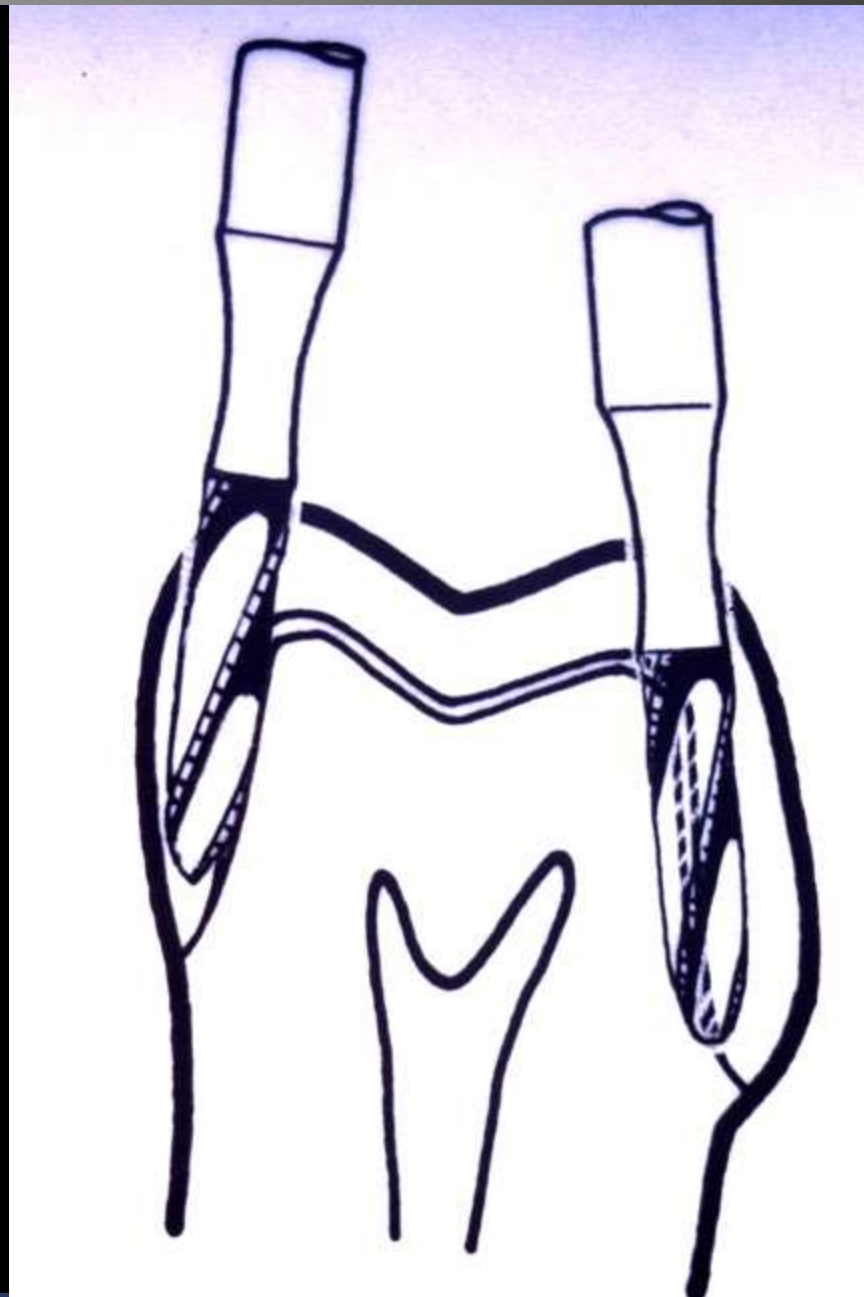


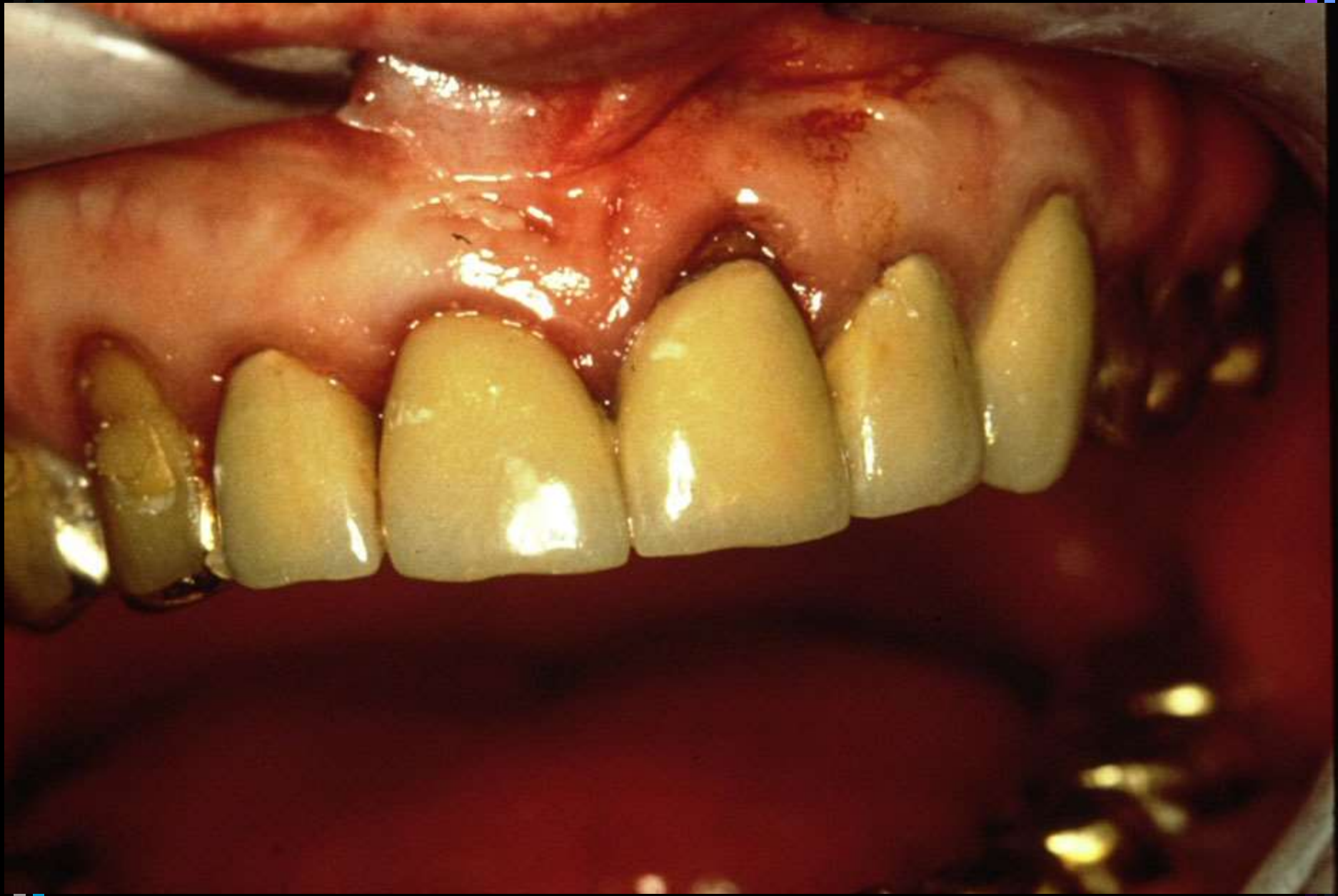


Lingualt



T-håndtak ELLER Ekskavator









# Vanligste problem med stifter

	Number of posts and cores studied/affected	Mean incidence
Post loosening	2596/135	5%
Root fracture	3043/95	3%
Caries	1047/16	2%
Periodontal disease	283/6	2%

Goodacre et al. 2003

# Stifter - fjerning

Abbott PV. Incidence of root fractures and methods used for post removal. Int Endod J 2002; 35: 63-7.

Hulsmann M. Methods for removing metal obstructions from the root canal. Endod Dent Traumatol 1993; 9(6): 223-37.



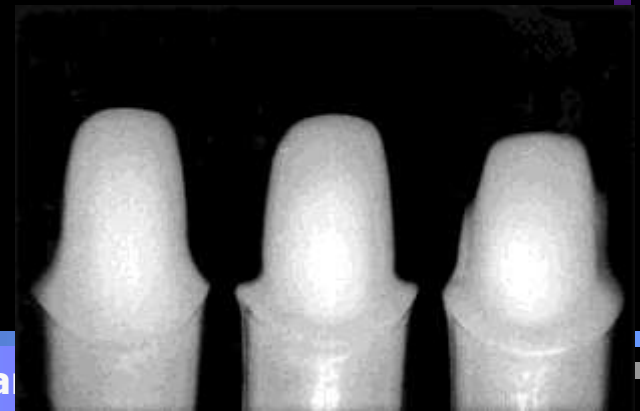
Method	Cast	Parallel	Threaded	Flexipost	Totals
Egglar post remover	91 (39.0)	5 (2.1)	-	-	96 (41.0)
Ultrasonics alone	9 (3.8)	39 (16.7)	-	-	48 (20.5)
Masserann + ultrasonics	5 (2.1)	19 (8.1)	-	1 (0.4)	25 (10.7)
Came out with crown	49 (20.9)	6 (2.6)	1 (0.4)	-	56 (23.9)
Unscrewed with pliers	-	-	9 (3.8)	-	9 (3.8)
Totals	154 (65.8)	69 (29.5)	10 (4.3)	1 (0.4)	234 (100)





# Resementering

- Retensjonen blir alltid redusert
- Sementers retinerende egenskaper er redusert ved dårlig tilpasning:
  - Glassionomerasement: noe
  - SinkFosfatsement: mye
  - Polykarbosylatsement: svært mye
- Sandblås innsiden før resegmentering
- Vurder preparering og/eller sementlås og/eller innerkonus





# Sandblasters

- 1a. Accu-Prep Deluxe/Dento-Prep  
Rønvig/Bisco
- 1b. Microetcher II/Microetcher IIA  
Danville Engineering

# BEHANDLING - CANDIDA

- ORAL HYGIENE
- DAG OG NATT
- FJERNING AV TRYKK IRRITASJON
- MEDIKAMENTELL
- KIRURGISK

# BEHANDLING - CANDIDA

## TRYKKAVLASTNING

- VISCO-GEL
- KERR-FITT

# BEHANDLING - CANDIDA - MEDIKAMENTELL



- CORSODYL
- FUNGIZONE
- DUMICOAT
- MYCOSTATIN
- SPESIFIKKE ANTIFUNGALE LM
  - NYSTATIN
  - AMFOTERICIN B